



## ButtonBar Plus Help

Button Bar Plus is a program launcher for Windows 3.x, and was designed to replace or use along with *Windows*<sup>TM</sup> Program Manager. ButtonBar Plus features 66 buttons that can be configured to launch any program, pif file, or batch file you care to set up. Following are a listing of topics to better help you use [ButtonBar Plus](#).

### [Getting Help](#)

### [How best to use Button Bar](#)

### [Configuring a Button](#)

### [Configuring ButtonBar Preferences](#)

### [Adjusting ButtonBar's Appearance](#)

### [Re-Arrange the Buttons on ButtonBar](#)

### [Using the Run Button](#)

### [Navigating ButtonBar](#)

### [Product Registration Information](#)

## Configuring a Button



Button Bar's initial setup automatically configures the first 18 buttons for you. The first three buttons (shown above) are permanent and can not be altered. The remaining pre-configured buttons are set for the standard Windows' programs and accessories. You can configure for these your own use or leave them as is.

The screenshot shows a dialog box titled "Button Configuration Menu" with a "Preferences" section. It includes fields for "Icon No." (set to 23) and "Selected Icon" (set to Button Bar). Below these are four text input fields: "Button Bar Program Title", "Path and Program Name", "Working Directory Name", and "Icon File Path and Name to Attach". To the right of each input field is a button: "Browse", "Clear", "Save", and "Exit".

### 1. Configure a new Button.

Click the Button Bar Configuration Button. The *Configuration Menu* will pop up center screen. Now Click on the ButtonBar Button you want to setup up. The Button Number and Current Icon will appear at the top of the menu.

### 2. Selecting a Program

Press the **Browse** Button. A file selection box will pop up, where you select the program file you want to add to ButtonBar. Double-Click the mouse cursor on the selected file (or Click once and press the Select button).

### 3. Select an Icon

You will then see *Icon Select Menu*, where if the selected program is a native window's program, the first 6 icons (If available) will be shown. Click the icon that will represent this program to you. Now press the **Apply** button, the *Select Command menu* will disappear and Configuration Menu will come to the fore front. The Program Name, Working Directory and Icon Path fields will be filled in with the choice you made. The final step is to type a Program Title in the top field as you want it to appear on the ButtonBar menu. This title will show on the menu bar as you pass the mouse pointer over the icon.

---

## Configuring a DOS Based Program

1. Follow the above instructions up to the point of the *Icon Select Bar*. Since a DOS program doesn't have icons embedded in it, none will show on the bar. Instead click the cancel button on the *Icon Select Bar*. The File select box will shift to the BBARICON directory. There you can pick from any of the icons shown and apply them to your program selection.

## Save and Exit Menu

Press the **Save Button** to save your button configuration, you will notice that Icon you chose will appear on the ButtonBar. Now, pick another button to configure or press the **Exit Button** to close the Configuration Menu.

See [Configuring Other Options](#) for ButtonBar Preferences.

## How To Use ButtonBar

ButtonBar Plus was designed to make the Windows Desktop easier to use. Programs that you use most often are just a mouse click away. Program manager can be very clumsy, and it's icons have a tendency to move around.

It is *not* recommended to use ButtonBar Plus as a Windows shell replacement, but as an alternative program launcher. ButtonBar would be more convenient to use if it is loaded at the start of your windows session. There are two ways to accomplish this, either drag the ButtonBar Icon into your Program Manager **Startup** group (Windows 3.1) or add BBAR.EXE to the "load=" line in your Win.ini file.

## ButtonBar Screen Appearance

ButtonBar Plus's default layout is 2 rows of 18 buttons, located across the top of the screen. You can change screen position and button matrix adjusting the horizontal width of ButtonBar. For example, place the mouse pointer on the lower right hand corner of Button Bar. You will notice that the mouse pointer has changed to opposing diagonal arrows, now click and hold the left mouse button down, resize ButtonBar towards the middle of the screen. Once you release the mouse button, ButtonBar will re-display with a different matrix. You can reposition ButtonBar on screen, by placing the mouse pointer on ButtonBar's Menu Bar and holding down the left mouse button. Now move ButtonBar to a new location and release the mouse button.

When you exit Windows or close ButtonBar, the last screen position and Button matrix will be saved. The next time you run ButtonBar, it will be in the same place you left it.

## Changing A Button's Position on the Bar

An Icon's position on the ButtonBar can be moved to a new location by using the *Re-Arrange Icon* option. To employ this feature, follow these steps:

1. Click the ButtonBar Configuration Button, then select the *Preferences* Menu and click *Re-Arrange Icon*. ButtonBar is now in the **Icon Move Mode**, and it will remain this way until it is de-selected by clicking *Re-Arrange Icon* again or clicking the **Exit Button**.



**Move Icon**

2. Now using your mouse, click the Button you wish to move once, then click again and hold the mouse button down. The *Move Icon* will appear, indicating a button move in progress. Now Drag and Drop the *Move Icon* to it's new position. The target button will be switched with the source button.

3. Now click the **Exit Button** to complete this operation.

If you want to move a button to the other ButtonBar page, drag the *Move Icon* over the right or left hand arrows and the page will change. Continue to hold the mouse button down until the *Move Icon* is over the desired location, then release the mouse button.

## Using The Run A Program Button

When you need to run an infrequently used program or maybe a program on a floppy disk, press the *Run A Program* button. A Drive/Directory box will pop-up center screen, where you select the drive, directory and program by clicking on the required box. Consult your Windows manual for a more detailed explanation of File Box navigation.

# Navigating ButtonBar

ButtonBar Plus consists of 72 icon buttons, of which 36 buttons are visible at a time. In the lower left and right hand corners are small arrows pointing in the opposite directions. The right arrow displays buttons 37 through 72, and the left button displays buttons 1 through 36. In addition, movement around the ButtonBar is possible by using combination of the Control Key and direction keys.



Navigation Buttons

## Using the Key Board

- |                                 |                                       |
|---------------------------------|---------------------------------------|
| 1. <b>Control - Home</b>        | Move to the first button on ButtonBar |
| 2. <b>Control - End</b>         | Move to the last button on ButtonBar  |
| 3. <b>Control - Left Arrow</b>  | Move one button to the Left           |
| 4. <b>Control - Right Arrow</b> | Move one button to the Right          |
| 5. <b>Control - Up Arrow</b>    | Move up one button vertically         |
| 6. <b>Control - Down Arrow</b>  | Move down one button vertically       |
| 7. <b>Control - Page Up</b>     | Display ButtonBar page one            |
| 8. <b>Control - Page Down</b>   | Display ButtonBar page two            |



# ButtonBar Plus

ButtonBar Plus was written by Mark DiBiasio. The ButtonBar Plus program, Help File and associated files remain the property of Mark DiBiasio. One license is granted per registered user, per machine. Corporate and Government Users are required to purchase a site license.

***Any questions or problems please contact:***      **Mark J. DiBiasio**

DataDesign Systems, Inc.  
Software City - Gaithersburg  
15958-B Shady Grove Road  
Gaithersburg, Maryland 20877  
Tel. (301) 330-0022

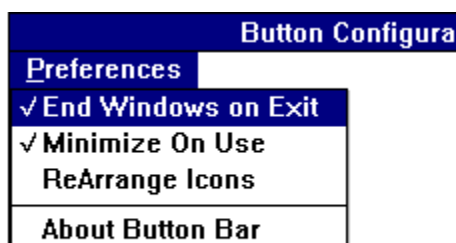
© Copyright 1992 - Mark DiBiasio

Windows is a Trademark of Microsoft Corporation

# Configuring Preferences

ButtonBar Plus has the following selectable options.

**1. Load Program With** option. Many Window's programs can be started with a command line switch. For example, say you want to load a Readme.txt file into NotePad, now you can run Notepad and use its Filebox function to load the file or can do this same thing in one motion with ButtonBar. Here's how: Press the ButtonBar Configuration button. On the program name and path field add a space and a "?\*.txt" (don't add the quote marks), Save and Exit the configuration menu. Now press the Notepad button. Prior to loading the program, a File Selection box will pop-up. Only files ending with the "TXT" extension will appear for selection. You can add multiply file extension delimiters by separating them with a semi-colon. (i.e. ?\*.txt;\*.ini;\*.ans)



**2. Minimize on Use** option. Select this option if you want ButtonBar to minimize to an icon after a program button is clicked. To choose this option, press then ButtonBar Configuration button, then click then **Preferences** Menu and click Minimize on Use.

**3. End Windows on Exit** option. Choosing this option will end windows and return you to DOS when you click the Exit Button. You will not be queried as to whether or not you really want to end windows. This is a fast exit. To select this option, follow the instructions mentioned in Item #2.

## Getting Help

Any time you want this Help Menu.. just press the F1 Key.

Programs are executable files, ending with the extension .exe, .com, .bat, or .pif. (i.e. Command.Com)

Programs written and designed to operate in the Windows environment. DOS based will also operate under windows, but they are not aware of windows, nor do they share common functions

# Product Registration

This version of ButtonBar Plus has been distributed on a ShareWare basis. You are granted a temporary license to evaluate this product before you purchase it. This evaluation period is not to exceed 15 days from the time you obtain it, after which you must decide to register it or delete it from your computer system.

*Upon Registration you will receive the latest version of ButtonBar Plus. As a bonus for your honesty, you will receive Drive Watch (hard disk monitor program - network compatible) FREE.*

**ButtonBar Plus Registration Fee** is \$18.00 U.S.

Please make checks or money orders payable to Mark DiBiasio

Mail To:

Mark DiBiasio  
c/o Software City  
15958-B Shady Grove Road  
Gaithersburg, Maryland 20877  
Tel. (301) 670-0818  
Fax (301) 330-5087

\* Maryland Residents add 5% Sales Tax for Gov. Shaffer

Credit Cards: MasterCard, Visa, American Express and Discover

Call, Fax or Mail the following information:

1. Credit Card Type
2. Credit Card Number
3. Expiration Date
4. Name as it appears on your card
5. Full Name, Address, and Telephone number.

**Government and Corporate users require a Site License - please contact us directly.**

## **Alternative Registration:**

You may have noted the Software City address. We are a nationwide chain of Software and Hardware resellers and we have been serving the computing public since 1982. For any and all your needs, Call us for the best price.

If you purchase anything over \$50.00 you get **ButtonBar Plus FREE!**, plus you get an additional 5% discount on all future purchases.

This offer is only good at the Gaithersburg store.